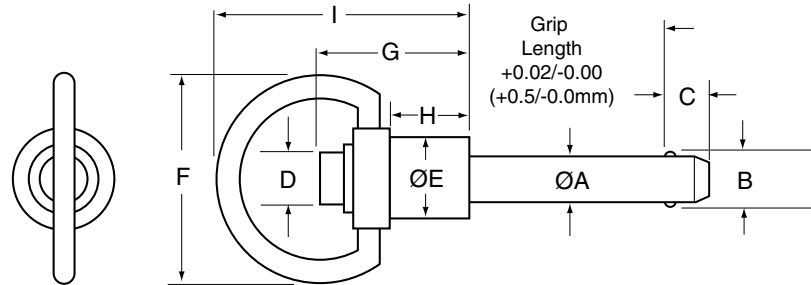




Ring-Handle Kwik-Lok® Pin MS17987



Ring-Handle Specifications – Inch

Nom Pin Dia	ØA		±0.005 B	+0.00/-0.04 C	D	E	F	G	H	I
	Min	Max								
3/16 (#10)	.1870	.1885	.220	.260	1/4	7/16	1 1/8	13/16	29/64	1 11/32
1/4	.2470	.2485	.289	.290	1/4	7/16	1 1/8	13/16	29/64	1 11/32
5/16	.3095	.3110	.375	.330	1/4	7/16	1 1/8	27/32	29/64	1 11/32
3/8	.3720	.3735	.440	.365	5/16	9/16	1 1/8	1	19/32	1 1/2
7/16	.4345	.4360	.509	.380	5/16	9/16	1 1/8	1	19/32	1 1/2
1/2	.4970	.4985	.594	.460	7/16	11/16	1 3/8	1 1/4	5/8	1 7/8
9/16	.5595	.5610	.666	.510	7/16	11/16	1 3/8	1 1/4	11/16	1 7/8
5/8	.6220	.6235	.750	.580	1/2	15/16	1 5/8	1 11/16	7/8	2 7/16
3/4	.7470	.7485	.887	.670	9/16	15/16	1 5/8	1 13/16	1 1/16	2 7/16
7/8	.8720	.8735	1.046	.760	3/4	1 3/16	1 3/4	2 3/16	1 13/32	2 29/32
1	.9970	.9985	1.219	.890	3/4	1 3/16	1 3/4	2 1/8	1 13/32	2 29/32

- The Ring-Handle Kwik-Lok® Pin is designed for applications which require small clearance area around the pin.
- Stainless steel handle for tough environment with blue anodized aluminum button (steel shanks), or stainless button (stainless steel shanks).
- Pin body available in:
Heat Treated 17-4 PH Stainless Steel or Heat Treated Alloy Steel, Cadmium plated.
- Ring allows for easy attachment of optional lanyard.

Ring-Handle Specifications – Metric

Nom Pin Dia	ØA		±0.25 B	+0.0/-1.0 C	D	E	F	G	H	I
	Min	Max								
5	4.92	4.96	5.54	6	6.5	10.8	28.0	21.0	11.5	34.1
6	5.92	5.96	6.99	7	6.5	10.8	28.0	21.0	11.5	34.1
8	7.92	7.96	9.42	8	6.5	10.8	28.0	22.0	11.5	34.1
10	9.92	9.96	11.86	9	7.7	14.2	28.0	25.0	15.1	38.0
12	11.92	11.96	14.45	10	10.1	17.2	35.2	28.6	15.9	46.0
16	15.92	15.96	19.00	14	12.4	23.9	41.9	37.0	22.2	56.0
20	19.92	19.96	24.08	17	14.6	23.9	41.9	46.0	27.0	61.6
25	24.92	24.96	30.94	22	19.2	30.0	45.0	55.6	35.7	72.4

Dimensions in millimeters



Ring-Handle – Inch

Pin Dia	Grip Length (inches)											
	0.5	0.75	1	1.25	1.5	1.75	2	2.5	3	4	5	6
Stainless Steel – High Strength Stainless Steel, 17-4 PH heat treated												
3/16	800200	800201	800202	800203	800204	800205	800206	800208	800209	800211	800213	800215
1/4	800216	800217	800218	800219	800220	800221	800222	800224	800225	800227	800229	800231
5/16	800232	800233	800234	800235	800236	800237	800238	800240	800241	800243	800245	800247
3/8	800248	800249	800250	800251	800252	800253	800254	800256	800257	800259	800261	800263
7/16	800264	800265	800266	800267	800268	800269	800270	800272	800273	800275	800277	800279
1/2	800280	800281	800282	800283	800284	800285	800286	800288	800289	800291	800293	800295
9/16	800296	800297	800298	800299	800300	800301	800302	800304	800305	800307	800309	800311
5/8	800312	800313	800314	800315	800316	800317	800318	800320	800321	800323	800325	800327
3/4	800328	800329	800330	800331	800332	800333	800334	800336	800337	800339	800341	800343
7/8	800344	800345	800346	800347	800348	800349	800350	800352	800353	800355	800357	800359
1	800360	800361	800362	800363	800364	800365	800366	800368	800369	800371	800373	800375
Alloy Steel – High Strength Alloy Steel, 4130 heat treated and cadmium plated, yellow trivalent chromium passivation												
3/16	800000	800001	800002	800003	800004	800005	800006	800008	800009	—	—	—
1/4	800016	800017	800018	800019	800020	800021	800022	800024	800025	800027	800029	800031
5/16	800032	800033	800034	800035	800036	800037	800038	800040	800041	800043	800045	800047
3/8	800048	800049	800050	800051	800052	800053	800054	800056	800057	800059	800061	800063
7/16	800064	800065	800066	800067	800068	800069	800070	800072	800073	800075	800077	800079
1/2	800080	800081	800082	800083	800084	800085	800086	800088	800089	800091	800093	800095
9/16	800096	800097	800098	800099	800100	800101	800102	800104	800105	800107	800109	800111
5/8	800112	800113	800114	800115	800116	800117	800118	800120	800121	800123	800125	800127
3/4	800128	800129	800130	800131	800132	800133	800134	800136	800137	800139	800141	800143
7/8	800144	800145	800146	800147	800148	800149	800150	800152	800153	800155	800157	800159
1	800160	800161	800162	800163	800164	800165	800166	800168	800169	800171	800173	800175

Contact customer service for other sizes.

Ring-Handle – Metric

Pin Dia	Grip Length (mm)											
	10	15	20	25	30	40	50	60	70	80	90	100
Stainless Steel – High Strength Stainless Steel, 17-4 PH heat treated												
5	850200	850201	850202	850203	850204	850205	850206	850207	850208	850209	850210	850211
6	850212	850213	850214	850215	850216	850217	850218	850219	850220	850221	850222	850223
8	850224	850225	850226	850227	850228	850229	850230	850231	850232	850233	850234	850235
10	850236	850237	850238	850239	850240	850241	850242	850243	850244	850245	850246	850247
12	850248	850249	850250	850251	850252	850253	850254	850255	850256	850257	850258	850259
16	850260	850261	850262	850263	850264	850265	850266	850267	850268	850269	850270	850271
20	850272	850273	850274	850275	850276	850277	850278	850279	850280	850281	850282	850283
25	850284	850285	850286	850287	850288	850289	850290	850291	850292	850293	850294	850295
Alloy Steel – High Strength Alloy Steel, 4130 heat treated and cadmium plated, yellow trivalent chromium passivation												
5	850000	850001	850002	850003	850004	850005	850006	850007	850008	850009	850010	850011
6	850012	850013	850014	850015	850016	850017	850018	850019	850020	850021	850022	850023
8	850024	850025	850026	850027	850028	850029	850030	850031	850032	850033	850034	850035
10	850036	850037	850038	850039	850040	850041	850042	850043	850044	850045	850046	850047
12	850048	850049	850050	850051	850052	850053	850054	850055	850056	850057	850058	850059
16	850060	850061	850062	850063	850064	850065	850066	850067	850068	850069	850070	850071
20	850072	850073	850074	850075	850076	850077	850078	850079	850080	850081	850082	850083
25	850084	850085	850086	850087	850088	850089	850090	850091	850092	850093	850094	850095

Contact customer service for other metric sizes.

KWIK-LOK® PINS



Kwik-Lok® Pin Specifications

Kwik-Lok® Pin Specifications – Inch

Pin Dia (in)	Double Shear Resistance Minimum (lbs)*		Locking Element Tensile Strength Min (lbs)†	Recommended Hole Diameter (in)	
	Stainless Steel 17-4 PH Heat Treated	Alloy Steel Heat Treated Cadmium Plated		Max	Min
3/16 (#10)	5,150	4,600	200	0.1940	0.1900
1/4	9,200	8,200	230	0.2540	0.2500
5/16	14,400	12,800	510	0.3165	0.3125
3/8	20,700	18,400	575	0.3790	0.3750
7/16	28,500	25,000	710	0.4425	0.4375
1/2	36,900	32,800	1,160	0.5050	0.5000
9/16	46,700	41,600	1,420	0.5675	0.5625
5/8	57,800	51,400	2,070	0.6300	0.6250
3/4	83,200	74,600	2,950	0.7570	0.7500
7/8	112,500	100,000	3,900	0.8820	0.8750
1	147,200	131,000	5,480	1.0100	1.0000

Kwik-Lok® Pin Specifications – Metric

Pin Dia (mm)	Double Shear Resistance Minimum (kN)*		Locking Element Tensile Strength Min (N)†	Recommended Hole Diameter (mm)	
	Stainless Steel 17-4 PH Heat Treated	Alloy Steel Heat Treated Cadmium Plated		Max	Min
5	24	21	890	5.1	5
6	35	31	890	6.1	6
8	65	58	2,250	8.1	8
10	100	88	2,280	10.1	10
12	144	128	3,150	12.1	12
16	257	229	9,200	16.1	16
20	403	358	13,100	20.15	20
25	631	561	23,400	25.15	25

* Double shear values are the minimum requirements according to NAS functionality tests.

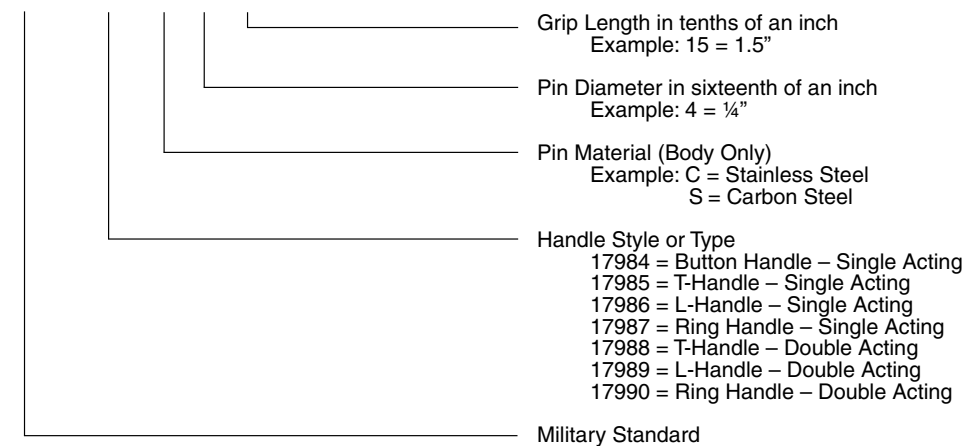
† Locking element tensile strength values are the minimum requirements of NAS functionality tests. Pins may be special ordered with 4 locking balls for additional locking element tensile strength.

Military Specifications (MS) & National Aerospace Standards (NASM)

NAS Number 1333-1346 and 1353-1366 are available.

MS Numbers 17984-90 now refer to NASM 17984-90.

MS 17984 C 4 15



KWIK-LOK® PINS

INFORMATION

Engineering and Product Changes

Product improvement is a continuing process.
Specifications and engineering data are subject to change without notice.
If current information is critical to your design, it is suggested that you contact our customer support department to verify any dimensions or specifications.

Specials

It is often possible to modify any item that is similar to a standard component part.